

40-86

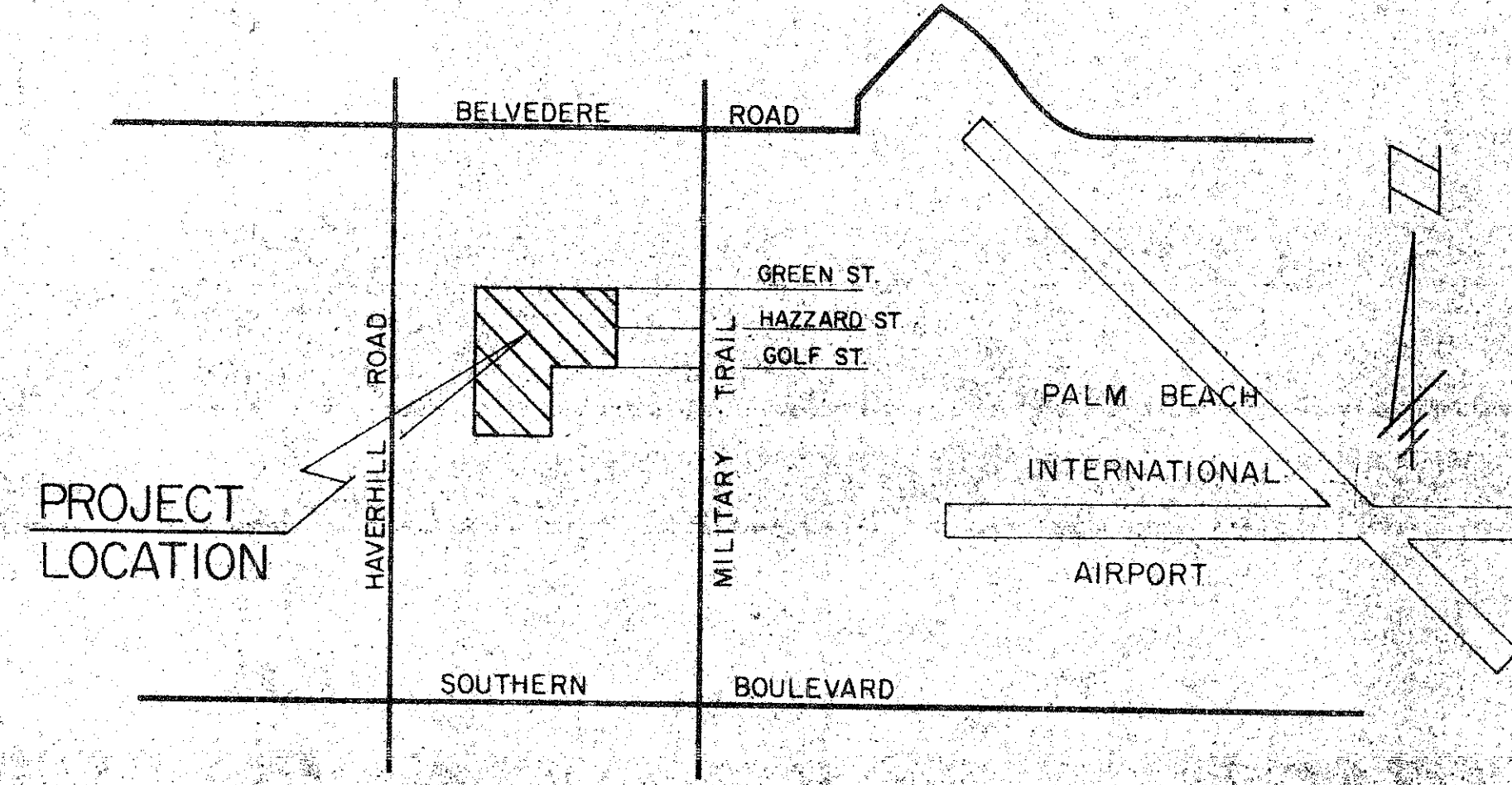
PLAT OF FOREST GLEN

A PORTION BEING A REPLAT OF THE REPLAT OF WESTOVER AS RECORDED IN PB. 18, PG. 23, TOGETHER WITH A PORTION OF THE NORTHWEST 1/4 OF SECTION 36, TWP. 43 SOUTH, RGE. 42 EAST
PALM BEACH COUNTY, FLORIDA

JUNE 1980

SHEET 2 of 3 SHEETS

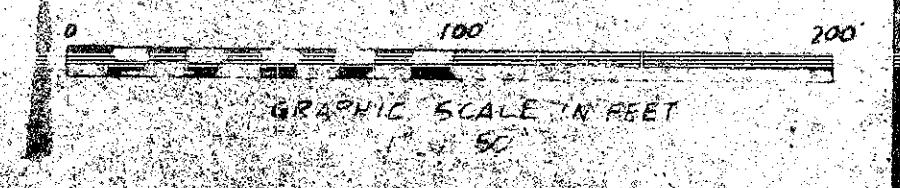
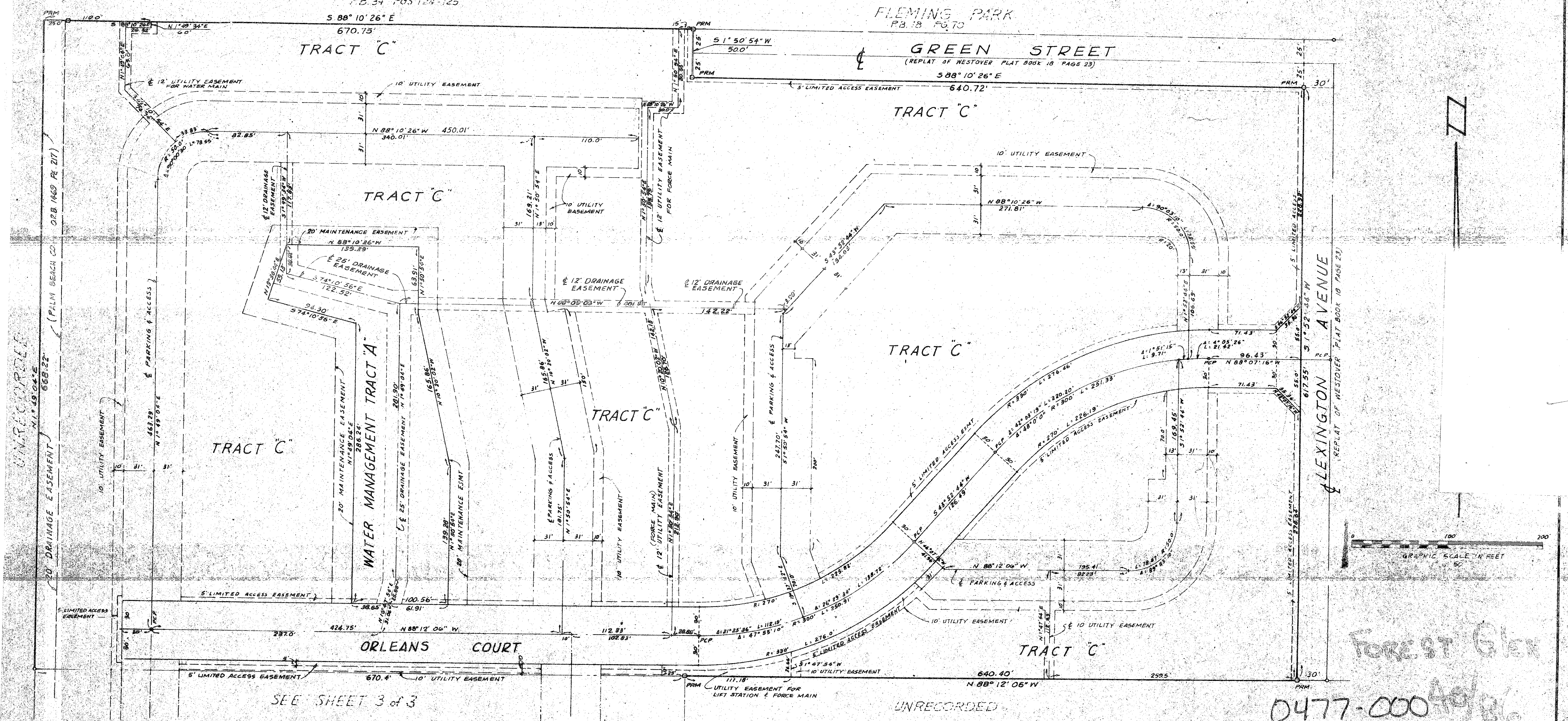
THIS INSTRUMENT PREPARED BY
ANTHONY MICHUDA
JAMES D. CARLTON, INC.
2829 OKEECHOBEE BOULEVARD
WEST PALM BEACH, FLORIDA



86

BRIARWOOD SOUTH
PB. 34 PGS 124-125

FLEMING PARK
PB. 18 PG. 70



Forest Glen

SEE SHEET 3 of 3

UNRECORDED

0477-000 6/80

JAMES D. CARLTON, INC.
CONSULTING ENGINEERS AND LAND SURVEYORS
2829 OKEECHOBEE BOULEVARD, WEST PALM BEACH, FLORIDA
683-8800